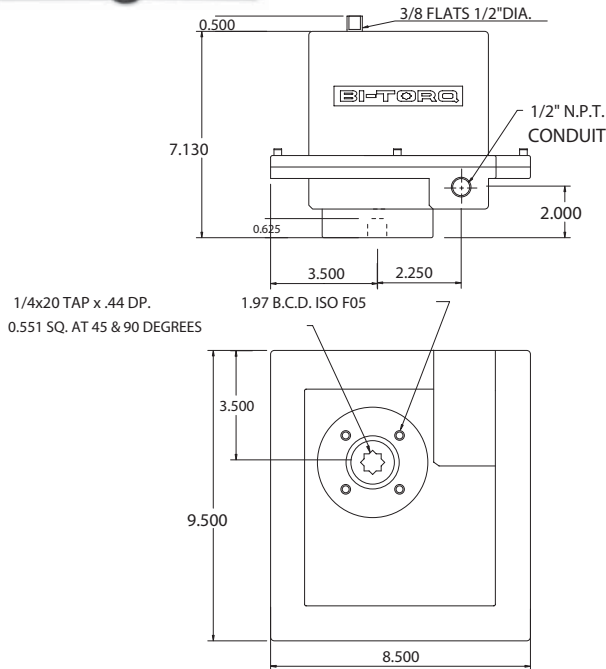




ELECTRIC ACTUATORS

BI-200 AND 300 NEMA 7



SPECIFICATIONS FOR 115VAC ACTUATOR

Output Torque	BI-200...200 inch pounds BI-300...300 inch pounds
Cycle Time	BI-200...5 sec/90° BI-300...5 sec/90°
Duty Cycle	25%
Standard Motor	115VAC/60Hz/1ph
Standard Enclosure	NEMA 7
Enclosure Material	Aluminum
Enclosure Coating	Thermal bonding polyester powder
Temperature Rating**	-40°F to +150°F
Thermal Overload Protection	Standard
Manual Override	Optional
Lock Rotor Current	BI-200...0.75 amps BI-300...1.1 amps
Switches	15A, 1/2 HP 125 250VAC/0.5A/125VDC
Weight	9 pounds

**heater required below 0°F
CLEARANCE REQUIRED FOR COVER REMOVAL: 4.000"

NEMA 7 rated Class I, Groups C&D; Class II, Groups E, F & G Divisions I and II
CSA file LR79567