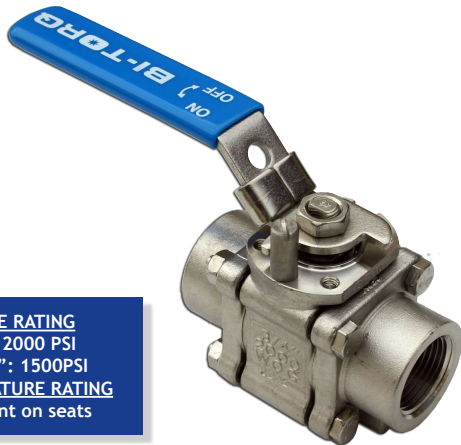




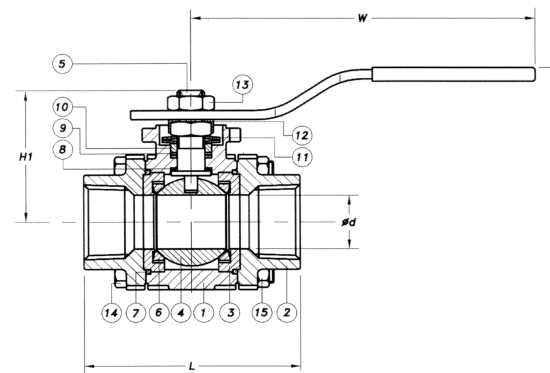
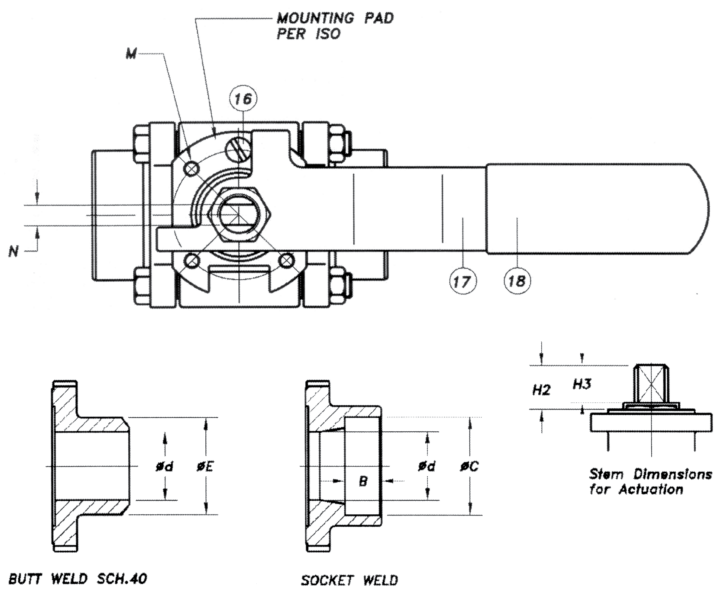
3-PIECE API 607 FIRE SAFE BALL VALVE: 1/2"-2"



PRESSURE RATING
1/4"-1": 2000 PSI
1-1/4"-2": 1500PSI
TEMPERATURE RATING
Dependent on seats

- VALVE FEATURES**
- API 607 4th Edition fire safe tested and designed
 - 3-piece swingout design
 - high cycle live loaded stem packing
 - ISO 5211 mounting pad
 - built to ANSI B16.34 class 600 dimensions with investment cast body
 - locking handle

BILL OF MATERIALS			
PART #	NAME	MATERIAL	QTY
1	BODY	ASTM A351-CF8M (OPTION FOR CARBON)	1
2	END CAP	ASTM A351-CF8M (OPTION FOR CARBON)	2
3	RETAINER	ASTM A351-CF8M	1
4	BALL	ASTM A351-CF8M	1
5	STEM	ASTM A276-316	1
6	SEAT	RTFE	2
7	GASKET	GRAPHOIL	1
8	PACKING	GRAPHOIL	1
9	THRUST WASHER	GRAPHOIL	1
10	GLAND RING	AISI 304SS	1
11	DISC SPRING	AISI 301SS/50 CrV4	1
12	LOCK PAD	ASTM A167-304SS	1
13	STEM NUT	ASTM A194 GR.8	1
14	BOLT	ASTM A194 GR.8	4
15	NUT	ASTM A194 GR.8	4
16	STOP PIN	AISI 304SS	1
17	HANDLE	ASTM A167-304SS	1
18	SLEEVE	VINYL	1



DIMENSIONAL DATA														
SIZE	ISO 5211	L	W	H	H1	H2	H3	d	E	B	C	N	M	WEIGHT (LBS.)
1/2"	F03/1.42	2.95	4.50	2.19	1.65	0.48	0.34	0.59	0.88	0.39	0.87	0.22	M5	2.0
3/4"	F03/1.42	3.15	4.50	2.28	1.77	0.55	0.39	0.79	1.10	0.51	1.08	0.22	M5	2.5
1"	F04/1.65	3.88	5.75	2.63	2.29	0.62	0.56	1.00	1.35	0.51	1.36	0.30	M5	4
1-1/2"	F05/1.97	4.72	7.00	3.31	3.03	1.07	0.73	1.50	1.94	0.51	1.93	0.34	M6	8
2"	F05/1.97	5.51	7.00	4.00	3.38	1.10	0.78	2.00	2.42	0.63	2.41	0.34	M6	14

3-PIECE API 607 FIRE SAFE BALL VALVE: 2-1/2" - 3"

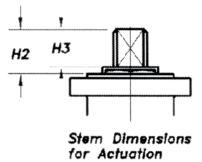
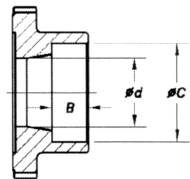
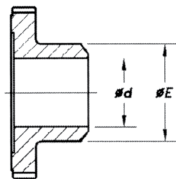
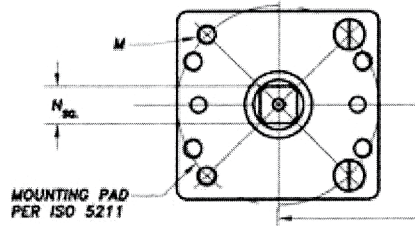
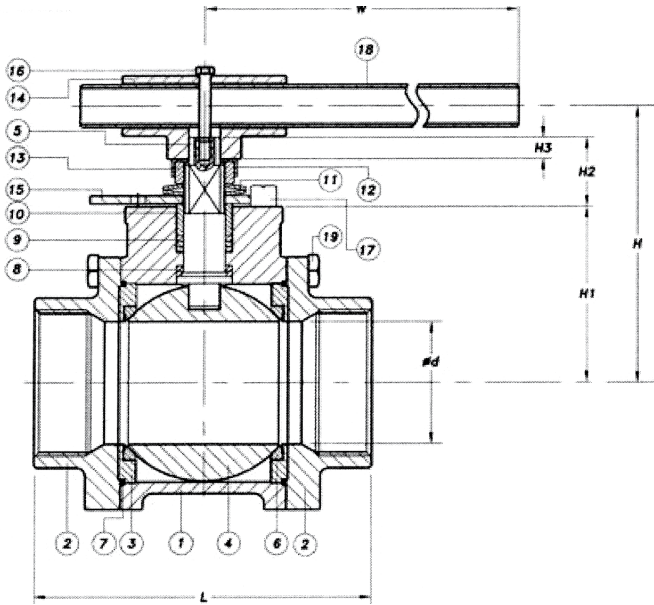


PRESSURE RATING
2-1/2": 1000 PSI
3"-4": 800PSI
TEMPERATURE RATING
Dependent on seats

- VALVE FEATURES**
- API 607 4th Edition fire safe tested and designed
 - 3-piece swingout design
 - high cycle live loaded stem packing
 - ISO 5211 mounting pad
 - built to ANSI B16.34 class 600 dimensions with investment cast body
 - locking handle

BILL OF MATERIALS

PART #	NAME	MATERIAL	QTY
1	BODY	ASTM A351-CF8M (OPTION FOR CARBON)	1
2	END CAP	ASTM A351-CF8M (OPTION FOR CARBON)	2
3	RETAINER	ASTM A351-CF8M	1
4	BALL	ASTM A351-CF8M	1
5	STEM	ASTM A276-316	1
6	SEAT	RTFE	2
7	GASKET	GRAPHOIL	1
8	PACKING	GRAPHOIL	1
9	THRUST WASHER	GRAPHOIL	1
10	GLAND RING	AISI 304SS	1
11	DISC SPRING	AISI 301SS/50 CrV4	1
12	LOCK PAD	ASTM A167-304SS	1
13	STEM NUT	ASTM A194 GR.8	1
14	BOLT	ASTM A194 GR.8	4
15	NUT	ASTM A194 GR.8	4
16	STOP PIN	AISI 304SS	1
17	HANDLE	ASTM A167-304SS	1
18	SLEEVE	VINYL	1



DIMENSIONAL DATA

SIZE	ISO 5211	L	W	H	H1	H2	H3	E	B	C	N	M	WEIGHT (LBS.)
2-1/2"	F10/4.02	7.25	8.84	5.24	3.25	1.65	0.58	2.76	2.52	4.02	0.55	M10	22
3"	F10/4.02	8.03	13.74	6.60	4.28	1.81	0.58	3.78	3.17	4.02	0.75	M10	35
4"	F10/4.02	9.45	13.74	7.14	4.79	1.83	0.58	3.78	3.17	4.02	0.75	M10	55