

STAINLESS STEEL 2000 WOG 3-PIECE BALL VALVE



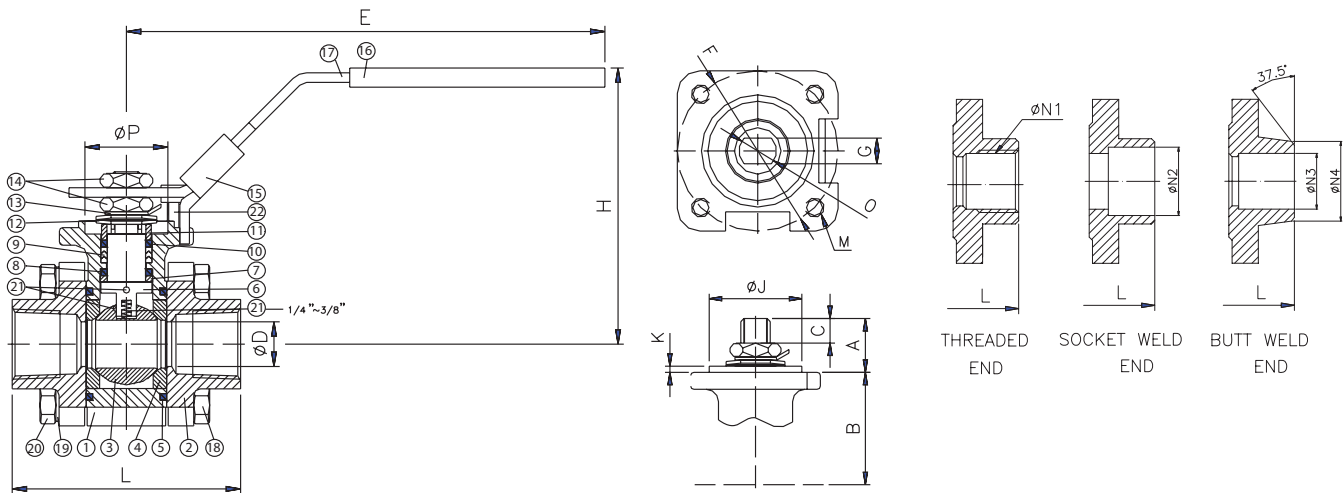
PRESSURE RATING
1/4"-1" 2000PSI
1-1/2"-2" 1500PSI
TEMPERATURE RATING
+450° F Maximum CWP
366° F Steam Maximum

VALVE FEATURES

- Full port SS high performance, heavy-duty 3-piece valve
- 2000 PSI 1/2" through 1"; 1500PSI 1-1/4 through 2"
- self-adjusting stem packing
- NPT, butt weld or socket
- bottom entry blow-out proof stem for maximum safety
- swing-out 3-piece design for easy maintenance
- ISO 5211 mounting pad for and bellville washers for actuation

BILL OF MATERIALS

PART #	NAME	MATERIAL	QTY
1	BODY	ASTM A351 CF8M	1
2	END CAP	ASTM A351 CF8M	2
3	BALL	ASTM A351 CF8M	1
4	BALL SEAT	RTFE	2
5	BODY SEAL	TFE	2
6	STEM	ASTM A276 316SS	1
7	THRUST WASHER	50% TFE + 50% SS POWDER	1
8	STEM SEAL	RTFE	1
9	STEM PACKING	TFE	1
10	THRUST WASHER	50% TFE + 50% SS POWDER	1
11	FOLLOWER	ASTM A276 TYPE 304SS	1
12	BELLEVILLE WASHER	ASTM A276 TYPE 301SS	2
13	LOCK WASHER	ASTM A276 TYPE 304SS	1
14	STEM NUT	ASTM A276 TYPE 304SS	1
15	LOCKING DEVICE	ASTM A276 TYPE 304SS	1
16	HANDLE	ASTM A276 TYPE 304SS	1
17	GRIP	VINYL	1
18	BODY BOLT	ASTM A276 TYPE 304SS	4
19	SPRING WASHER	ASTM A276 TYPE 304SS	4
20	NUT	ASTM A276 TYPE 304SS	4
21	ANTI-STATIC DEVICE	ASTM A276 TYPE 316SS	1
22	STOP PIN	ASTM A276 TYPE 304	1



DIMENSIONAL DATA

SIZE	ISO 5211	A	B	C	D	E	F	G	G1	L	N1	N2	N3	N4	W	CV	WEIGHT (LBS.)
1/4"	F03	0.571	1.42	0.22	5.91	0.20	0.89	0.47	0.37	2.65	NPT	0.56	0.36	0.54	M5	8	1.37
3/8"	F03	0.571	1.42	0.22	5.91	0.20	0.89	0.47	0.37	2.65	NPT	0.69	0.49	0.67	M5	8	1.37
1/2"	F03	0.630	1.42	0.44	5.91	0.25	0.91	0.59	0.37	2.84	NPT	0.88	0.62	0.84	M5	38	1.37
3/4"	F03	0.630	1.42	0.45	5.91	0.25	1.27	0.75	0.56	3.83	NPT	1.08	0.83	1.05	M5	71	1.76
1"	F04	0.827	1.65	0.47	7.09	0.31	1.31	0.87	0.63	4.33	NPT	1.35	1.05	1.31	M5	110	3.31
1-1/4"	F04	0.827	1.65	0.47	7.09	0.31	1.33	0.84	0.69	4.65	NPT	1.69	1.38	1.66	M5	230	4.32
1-1/2"	F05	1.024	1.97	0.55	7.87	0.37	1.41	0.84	0.75	5.12	NPT	1.93	1.61	1.90	M6	350	6.53
2"	F07	1.245	2.76	0.55	7.87	0.37	1.41	1.02	0.87	5.59	NPT	2.41	2.07	2.38	M8	600	9.13