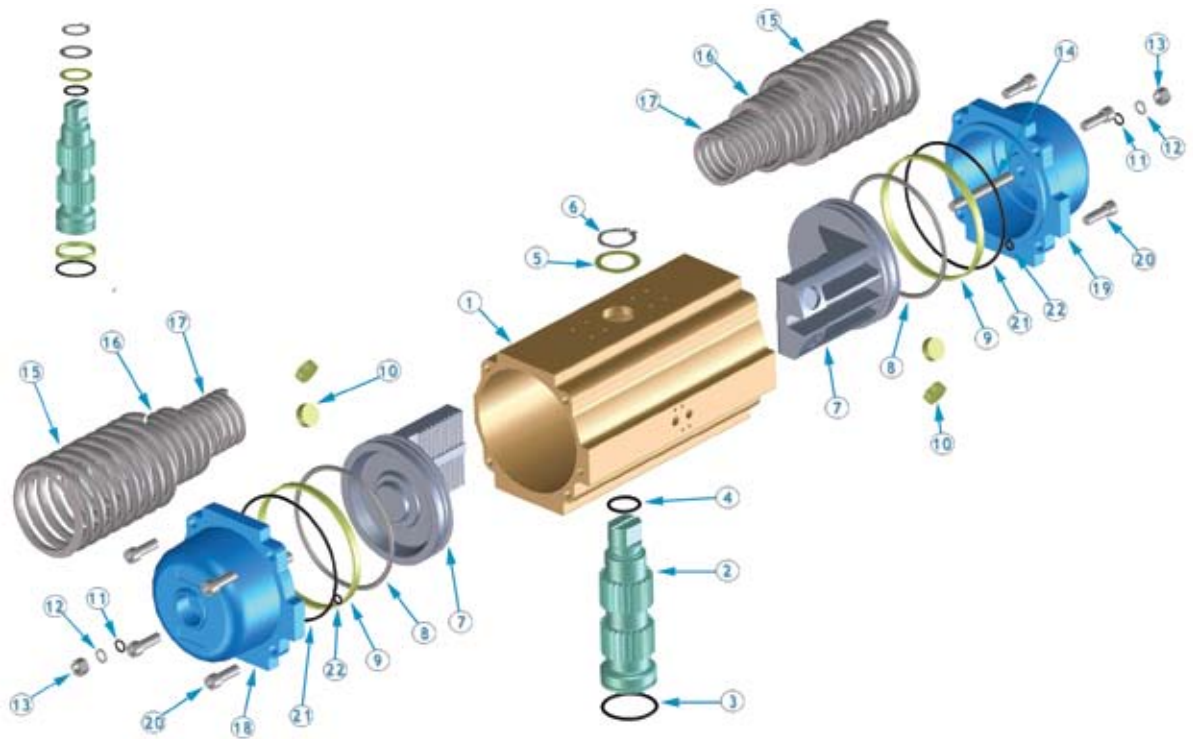


PARTS BREAKDOWN FOR PN-160 THROUGH PN-270



PART NUMBER	DESCRIPTION	MATERIAL	TREATMENT	QTY. (DA)	QTY. (SR)
1	BODY	EXTRUDED ALUMINUM	HARD ANODIZED	1	1
2	ANTI-BLOWOUT PINION	STEEL	NICKEL PLATED	1	1
3	LOWER PINION O-RING*	NBR70	---	1	1
4	TOP PINION O-RING	NBR70	---	1	1
5	PINION SPACER RING	PTFE+15% GRAPHITE	---	1	1
6	PINION SNAP RING*	STEEL	NICKEL PLATED	1	1
7	PISTON	DIE CAST ALUMINUM	NICKEL PLATED	1	1
8	PISTON O-RING*	NBR70	---	2	2
9	ANTI-FRICTION RING*	PTFE+15% GRAPHITE	---	2	2
10	PISTON THRUST BLOCK	PTFE+15% GRAPHITE	---	2	2
11	STOP BOLT O-RING*	NBR70	---	2	2
12	STOP BOLT WASHER	STAINLESS STEEL	---	2	2
13	STOP BOLT RETAINING NUT	STAINLESS STEEL	---	2	2
14	STOP BOLT	STAINLESS STEEL	---	2	2
15	EXTERNAL SPRING	STEEL	ZINC PHOSPHATE COATED	N/A	SEE SPRING CHART
16	CENTRAL SPRING	STEEL	ZINC PHOSPHATE COATED	N/A	SEE SPRING CHART
17	INTERNAL SPRING	STEEL	ZINC PHOSPHATE COATED	N/A	SEE SPRING CHART
18	LEFT END CAP	DIE CAST ALUMINUM	EPOXY COATED	1	1
19	RIGHT END CAP	DIE CAST ALUMINUM	EPOXY COATED	1	1
20	END CAP BOLTS	STAINLESS STEEL	---	8 (160-200) 12 (270)	8 (160-200) 12 (270)
21	END CAP O-RING	NBR70	---	2	2
22	SUPPLY HOLE O-RING	NBR70	---	2	2
23	CARTRIDGE SPRING	STEEL	ZINC PHOSPHATE COATED	---	12 (270 ONLY)

*Parts subject to wear